

STABLE | ENERGY-SAVING | CLEAN | AND EFFICIENT

Oil-free air compressor



Class 0
ISO8573-1



Dream (Shanghai) Compressor Co.,Ltd.

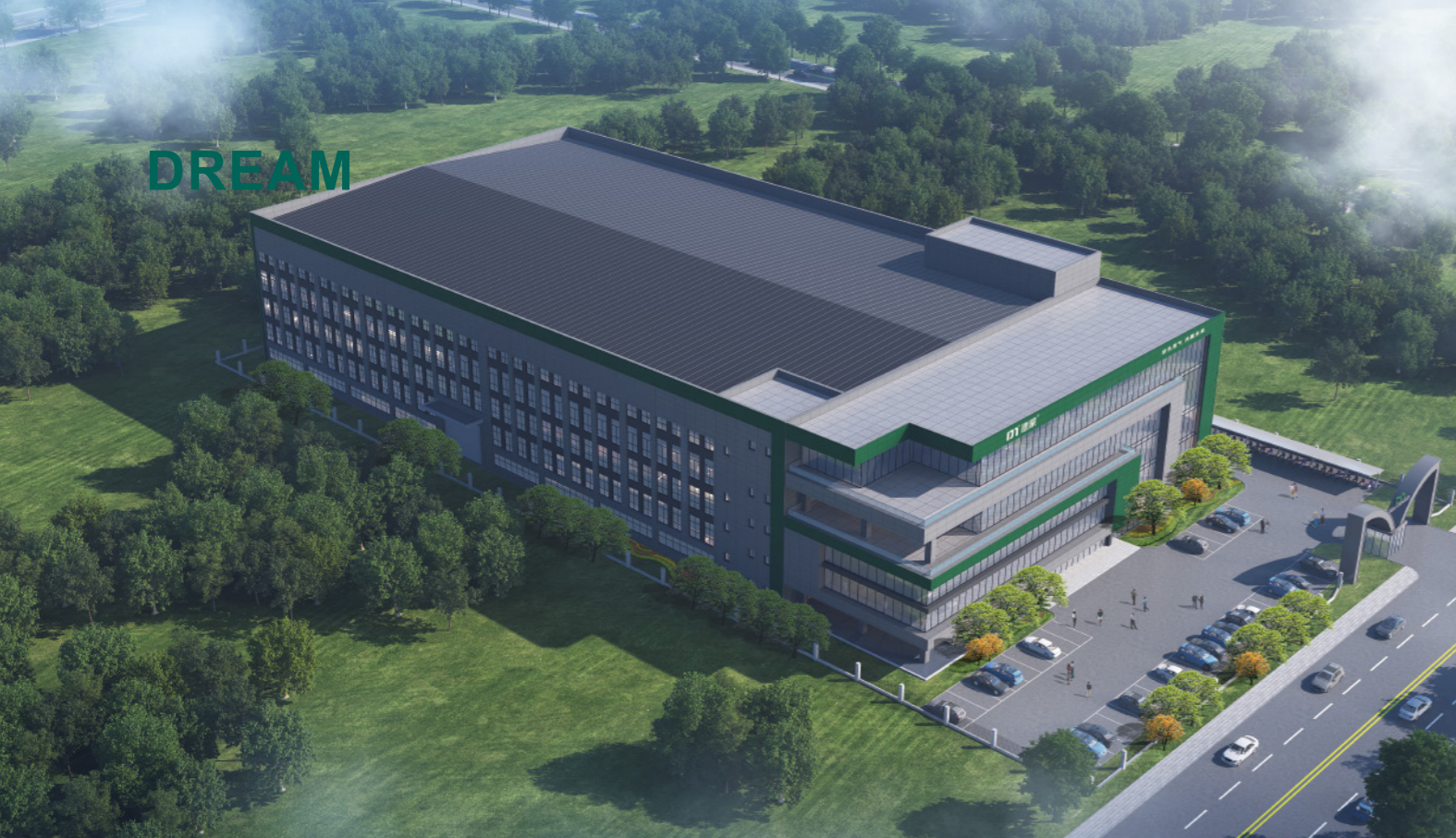
📍 (Shanghai Operations Headquarters) No. 30,Lane 38,Caoli Road,
Fengjing Town,Jinshan District,Shanghai
(Zhejiang Manufacturing Center) No. 916,Chuangzhi Road,Xindai Town,
Pinghu City,Jiaxing City,Zhejiang Province

☎ 86-21-67350068
✉ tanggaolu@dmcomp.com



www.dreamcompressor.com
www.dmcomp.com

Dream(Shanghai) Compressor Co.,Ltd.



ABOUT DREAM

 **45000** m²
factory area

 **100+** 项
Invention patents and honors

 **20+**
Regional branches/subsidiaries

Dream (Shanghai) Compressor Co., Ltd. was established in Shanghai in 2011. It is a company specialized in designing, manufacturing and sales of air compressors.

A high-tech enterprise that sells and provides system solutions. In the process of development, it has obtained the title of Shanghai Brand Cultivation Demonstration Enterprise, Shanghai Professional

It has won honors such as special new enterprise, energy-saving equipment contribution enterprise, high-tech achievement transformation project, etc. Its products are widely used in new energy, chemical industry & chemistry, Electronics, textiles, brewing industry, medicine & food and many other fields.

Dream pursues product design concepts that are stable, energy-saving, clean, efficient, easy to operate and easy to maintain, and insists on developing based on market demand and innovation.

Oriented by development, the company invests 10%-15% of its profits every year into new product research and development and the upgrading and optimization of new and old products. Innovation is always the priority for Dream.

The driving force for progress. Dream provides gas compression solutions, covering customer demand analysis, site investigation, technical solution design, and project completion.

This analysis, non-standard solution customization, solution demonstration and promotion. Provide exclusive compressed gas solutions based on project needs.

In the development process of more than ten years, Dream Company has always adhered to the enterprise spirit of "working together to dream together and striving for excellence", constantly innovating and pursuing excellence. Dream people continue to explore and innovate to meet customer needs and provide users with better products and services. So far, Dream has established more than 20 branches/subsidiaries at home and abroad, with footprints all over the world. Its excellent product performance and efficient service concept continue to create value for users.

Dream is always your reliable partner. We firmly believe that by working with us, you will experience our high-quality products and expertise.

With professional services, pursue your dreams and create a better future with Dream!

DREAM CULTURE



VISON

Become a highly competitive gas compressor system solution provider in the industry



MISSON

Allowing users to worry more and sustainably save energy and gas

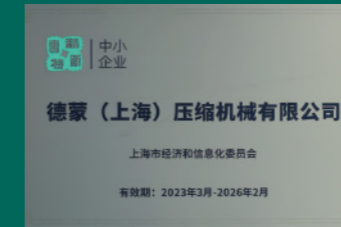
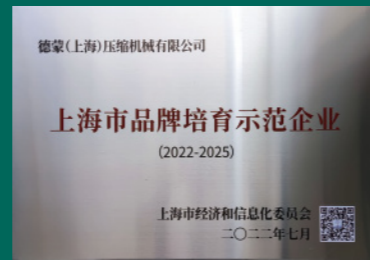


VALUE

Concentric shared dream professional focused co-created shared

Enterprise honor

- High-tech enterprise
- Specialized in special new enterprises
- Energy-saving technology and equipment contributing enterprises
- Shanghai brand cultivation model enterprise
- CE Certificates
- EMC Certificates
- TUV Rheinland Class 0 Oil Free Certificates
- Germany TUV product safety certification
- GCCA product quality and safety certification
- ISO 9001,14001,45001



Adhering to the business philosophy of "market-oriented, customer-centric, technical support and service guarantee", Dream is committed to providing customers with high quality products and industry-leading services. With Shanghai as the center and 20 service outlets nationwide as the auxiliary, Dream covers 34 provinces and autonomous regions of China's sales and service network, dedicated to provide customers with better service.

Global service

Dream is committed to providing quality products and services on a global scale, and has conducted overseas operations in many countries and regions, including Southeast Asia, Europe, and the Americas, and has established strong partnerships in overseas markets. Our overseas agents have rich experience in cross-cultural communication and international vision, and are able to better understand and meet the needs of local customers and markets. In the future, we will continue to strengthen the development of overseas business, expand more overseas markets, and let China intelligent manufacturing shine on the international stage.



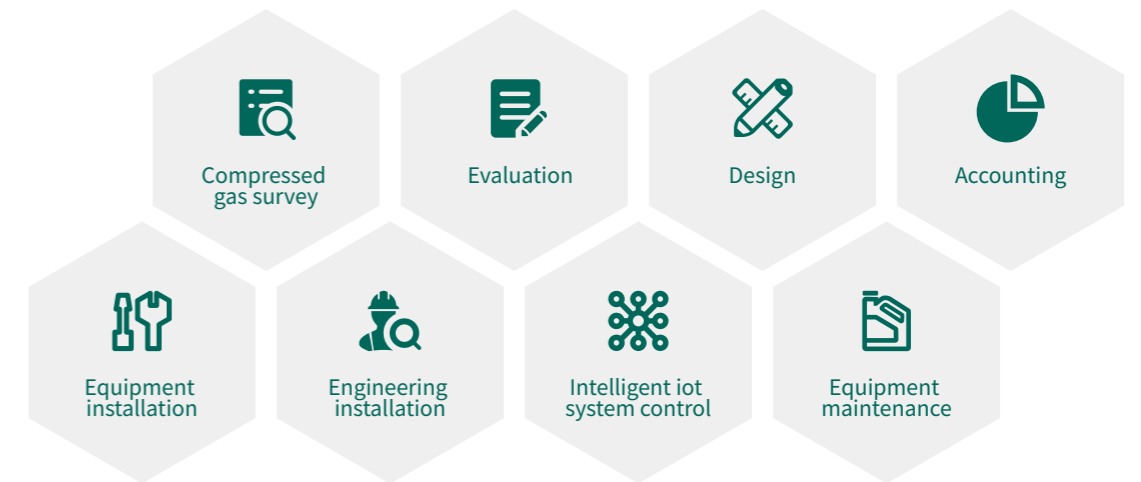
Dream Intelligent Manufacturing Six core competencies



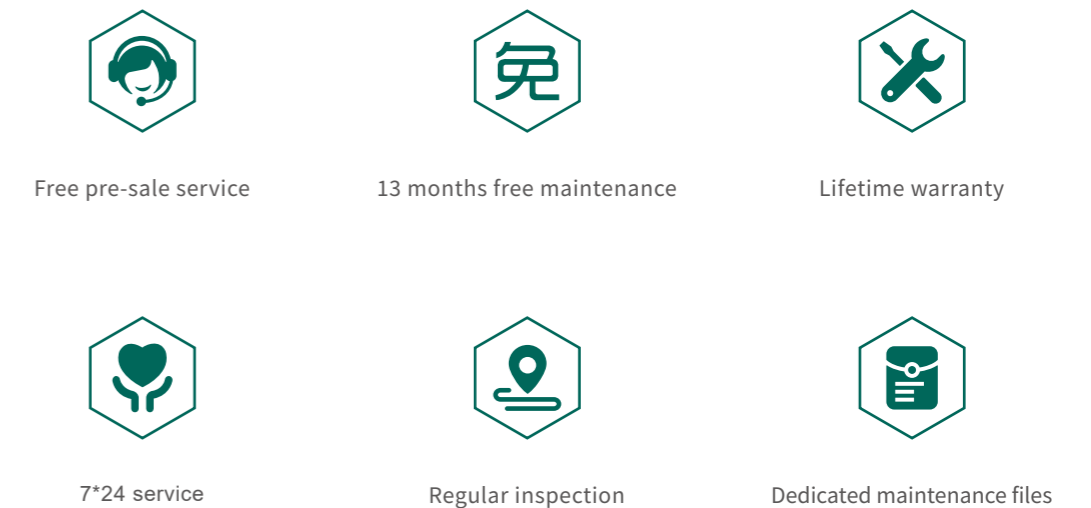
| Full process cycle and service

We provide the whole process cycle service for customers to build gas stations or upgrade, covering compressed gas system research, evaluation, design, edge calculation, equipment installation, engineering installation, intelligent iot system control, equipment maintenance and so on.

| Service process



| Performance pledge



Oil-free water lubrication permanent magnet variable frequency screw air compressor

Product characteristics

DMWV-G series
Oil-free water-lubricated permanent magnet variable frequency screw air compressor



DMW-G series
Oil-free water lubricated power frequency screw air compressor



Advanced water lubricated screw main engine

1. Made of stainless steel material, the head is free of rust and corrosion danger;
2. The use of water as a compression seal, cooling medium, air through water rinsing cleaner, can be pure oil-free;
3. The single-screw air machine has no clearance volume in theory, and has excellent dynamic lubrication performance and high working efficiency at rated speed; 4. The axial and radial forces of the single screw are balanced, and the star wheel rotates freely with the screw under water film lubrication, so the host components run smoothly under low load, ensuring low noise and durability.



High efficiency machine

Special motor for air compressor, imported brand bearings, protection grade IP54, insulation grade F, suitable for various working conditions, such as large dust, high temperature and other harsh environment; High energy efficiency motor, higher efficiency, less electricity, long-term use can significantly reduce the use of costs; The motor has large margin design and large starting torque, which can meet the requirements of the whole life under various working conditions.



Advanced and reliable electronic control system

Intelligent control system, with good man-machine interface; Selection of high-quality electrical components, contactors selected imported brands; Special program, with multi-channel pressure sensor and multi-channel temperature sensor, comprehensive detection of unit operation status, automatic control of machine status without special care; Emergency stop function, a press-type emergency stop switch is installed in a prominent position of the unit, which can be stopped immediately in an emergency; Independent air duct design, suitable for various working conditions.

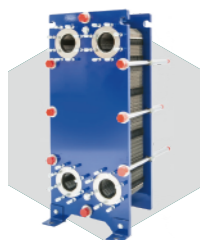
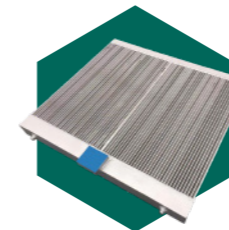


Plate cooler

With a certain corrugated shape of metal sheet stacked, the material corrosion resistant, easy to clean, long service life; Unit volume, large heat exchange area, high heat exchange efficiency, so that the water temperature has been kept within a reasonable range; Compact structure, light weight, small space.



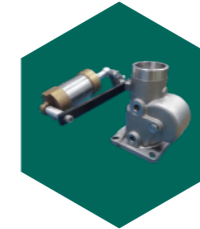
Tubular fin type air cooler

The heat exchange tube is made of copper material, which will not exchange ions with water, corrosion resistance and long service life; With efficient axial fan, sufficient air volume, good cooling effect, the external air duct is not easy to accumulate dust; The cooler is overhead, the hot air is discharged upward, there is no reflux, and the internal working temperature of the machine is stable.



High efficiency water filtration

Water filter is a full flow filter, the shell is made of stainless steel, special filter element, high filtration accuracy, long life, can filter out the east quality in the system to ensure clean lubrication water supply. The water filter is a standard feature of the water circulation system and is used to keep the system clean.



Special intake valve

The valve body is made of corrosion-resistant material, which is suitable for various environments and has high service life. Heavy weight structure, accurate and rapid gas control, low pressure loss; High integration, no wearing parts, simple maintenance, easy adjustment.



High efficiency water and gas separation tank

The excellent cyclone separation structure design is adopted, and the test proves that the water-air separation effect is good. Selection of all stainless steel material, corrosion resistance; Water level three induction alarm, automatic elimination and water supply.



Renewable ion exchange water softener

Automatic control of operation and regeneration process, no manual operation; Using ion exchange resin, reduce the hardness of raw water, achieve the purpose of softening hard water, avoid scaling, protect the system; Exchange resin is renewable and low cost.

DMWV-G series	working pressure		capacity		power		noise	Airoutlet Pipe diameter	net weight	dimensions(mm)		
	bar	psig	(m³/min)	cfm	kW	hp	dB			kg	length	width
DMWV-22G	7	102	2.2-3.7	78-131	22	30	61±3	G1"	655	1400	1000	1200
	8	116	2.0-3.4	71-120								
	10	145	1.8-3.0	64-106								
DMWV-30G	7	102	3.1-5.2	109-184	30	40	64±3	G1 1/2"	1150	1920	1170	1320
	8	116	2.8-4.7	99-166								
	10	145	2.5-4.3	88-152								
DMWV-37G	7	102	3.6-6.1	127-215	37	50	64±3	G1 1/2"	1200	1920	1170	1320
	8	116	3.3-5.6	117-198								
	10	145	3.0-5.0	106-177								
DMWV-45G	7	102	4.5-7.5	159-265	45	60	66±3	G2"	1320	1920	1170	1320
	8	116	4.0-6.8	140-240								
	10	145	3.6-6.0	127-212								
DMWV-55G	7	102	6.0-10.0	212-353	55	75	66±3	DN50	1520	1930	1320	1535
	8	116	5.4-9.0	191-318								
	10	145	4.6-7.8	162-275								
DMWV-75G	7	102	7.8-13.0	275-459	75	100	70±3	DN50	1620	1930	1320	1535
	8	116	7.2-12.0	254-424								
	10	145	6.0-10.0	212-353								
DMWV-90G	7	102	9.3-15.5	318-547	90	120	70±3	DN80	1800	1930	1320	1535
	8	116	8.4-14.0	297-494								
	10	145	7.5-12.5	265-441								
DMWV-110G	7	102	12.0-20.0	424-706	110	150	72±3	DN80	3100	2300	1600	1750
	8	116	10.8-18.0	381-636								
	10	145	9.6-16.0	339-565								
DMWV-132G	7	102	15.0-25.0	530-883	132	175	72±3	DN80	3250	2300	1600	1750
	8	116	13.8-23.0	487-812								
	10	145	12.0-20.0	424-706								

DMWV-G series	working pressure		capacity		power		noise	Airoutlet pipe diameter	net weight	dimensions(mm)		
	bar	psig	(m³/min)	cfm	kW	hp	dB			kg	length	width
DMW-22G	7	102	3.7	131	22	30	61±3	G1"	655	1400	1000	1200
	8	116	3.4	120								
	10	145	3.0	106								
DMW-30G	7	102	5.2	184	30	40	64±3	G1 1/2"	1150	1920	1170	1320
	8	116	4.7	166								
	10	145	4.3	152								
DMW-37G	7	102	6.1	215	37	50	64±3	G1 1/2"	1200	1920	1170	1320
	8	116	5.6	198								
	10	145	5.0	177								
DMW-45G	7	102	7.5	265	45	60	66±3	G1 1/2"	1320	1920	1170	1320
	8	116	6.8	240								
	10	145	6.0	212								
DMW-55G	7	102	10.0	353	55	75	66±3	DN50	1520	1930	1320	1535
	8	116	9.0	318								
	10	145	7.8	275								
DMW-75G	7	102	13.0	459	75	100	70±3	DN50	1620	1930	1320	1535
	8	116	12.0	424								
	10	145	10.0	353								
DMW-90G	7	102	15.5	547	90	120	70±3	DN50	1800	1930	1320	1535
	8	116	14.0	494								
	10	145	12.5	441								
DMW-110G	7	102	20.0	706	110	150	72±3	DN80	3100	2300	1600	1750
	8	116	18.0	636								
	10	145	16.0	565								
DMW-132G	7	102	25.0	883	132	175	72±3	DN80	3250	2300	1600	1750
	8	116	23.0	812								
	10	145	20.0	706								

Cooling method: (Air-cooled: DMW-22G~DMW-45G)、(Water: DMW-55G~DMW-132G)

Energy Conservation

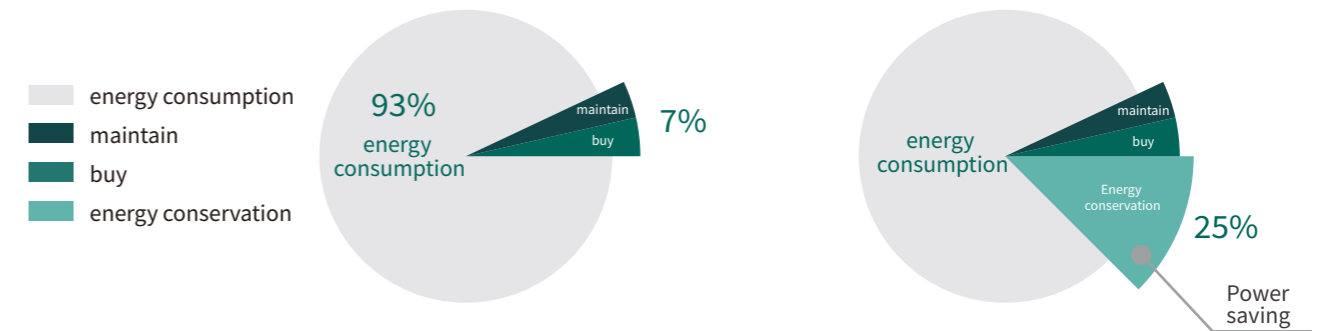
Air compressors are the "electric tigers" in industrial electricity consumption, with an average power consumption of 20%. We have made a series of efforts and research on how to use the same electricity to create more air to help users save energy, and have made important breakthroughs. The permanent magnet variable frequency screw machine developed by the company can save users about 25-35% of electricity while ensuring the original work efficiency.



Energy saving and cost reduction

When purchasing an air compressor, the traditional cost (i.e. purchase cost+maintenance cost) only accounts for 7% of the total cost, while energy consumption accounts for 93%. The two-stage compression direct connection/permanent magnet screw air compressor saves 25-30% energy compared to ordinary (power frequency) air compressors.

— taking 75KW as an example



- intelligent control
- Rust proof shell
- Efficient and energy-saving
- Constant current and stable voltage
- Easy to use and worry free
- reduce the noise

